

ACADEMY

Monitor Arm Series



Grand Stands

Ergonomic Workstation Solutions

Since 1991 - Pioneers, Designers & Manufacturers of the Finest Custom Ergonomic Solutions

HOW YOU WORK AFFECTS HOW WELL YOU WORK

PREMIUM QUALITY

ACADEMY MONITOR ARMS RAISE THE BAR FOR PERFORMANCE, RELIABILITY AND HEIGHT RANGE

The market is awash in bouncy, flimsy monitor arms that have limited height range and rely on springs or gas cylinders for counter-balance support.

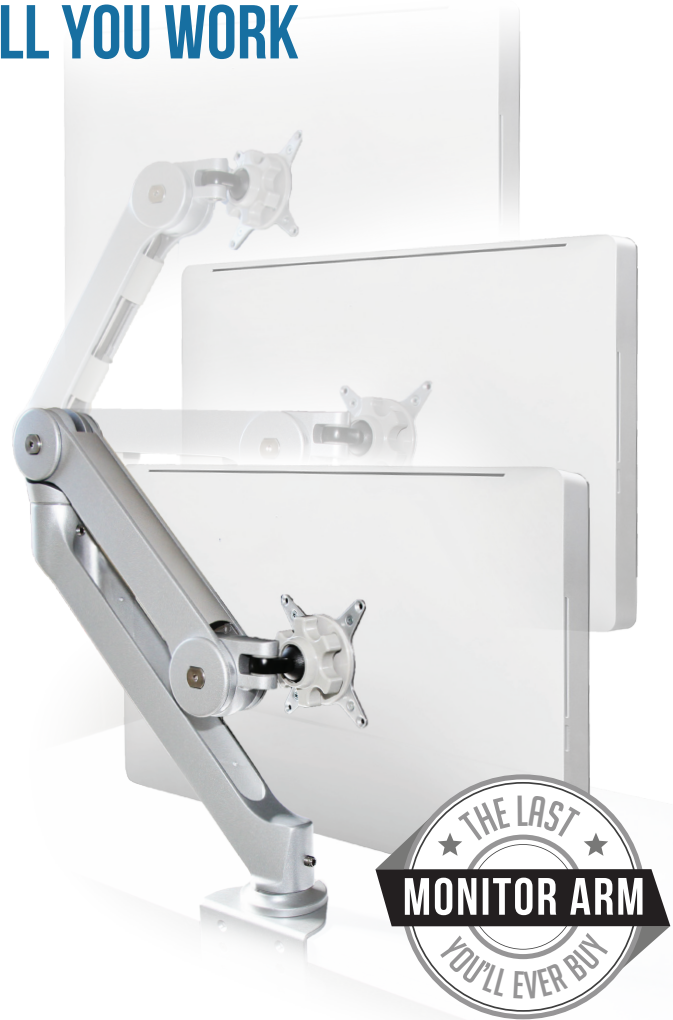
Grand Stands' **Ace 20** introduces industry changing *Friction Support Technology*. The **Ace 20** is a true sit-stand monitor arm with 20" of height range that greatly exceeds the industry standard 10" to 13".

Our intelligent engineering provides ease of use and the stability to avoid screen bounce when typing. With no bottom weight load, the **Ace 20** supports a monitor from 1 to 30 pounds.

FEATURES:

- ▶ 20" of vertical height range
- ▶ True sit to stand without tall ugly poles
- ▶ Tilt adjustment, swivels portrait to landscape
- ▶ 27.5" front to back distance, compacts to 4"
- ▶ Clamp and grommet mount included
- ▶ 0 to 30 pounds of supported weight, for single monitor,
- ▶ Very stable and limited bounce when the user is typing
- ▶ Standard Color Silver (-S), Black available (-B)
- ▶ Internal Cable Management
- ▶ Lifetime warranty, no gas cylinder to fail

#ACE20 - Single Monitor Arm



ACE 20

Single & Double Monitor Arm System

Colors Available



Silver



Black



ACADEMY

Monitor Arm Series



Grand Stands

Ergonomic Workstation Solutions

Since 1991 - Pioneers, Designers & Manufacturers of the Finest Custom Ergonomic Solutions



ACE 20 Height Range: 20"

Maximum Extension From Post: 27.56"

Depth from Post (Closed): 0"

Tilt adjustment: $\pm 15^\circ$

Display Pan Swing - Side to Side: 50"

VESA Compatibility: 75x75mm/100x100mm

Height Range : 20"

Weight Capacity : 0 – 30 LB

